

TECHNICAL DATA SHEET

PENOSIL Window Tape Full Glue Internal 400

Window Tape Full Glue Internal 400 Internal is a vapour barrier tape to cover window and door joints from inside.

Main benefits

- Prevents penetration of water vapour in the construction foam and wall structure.
- Ensures airtightness.
- Acrylic adhesive has excellent adhesion to all of the most common construction materials.
- Nonwoven adhesive on one side of the joint tape provides strong and airtight bond with various construction materials.
- The adhesive stripes on both sides of the joint tape allow its use before or after installation of windows and doors.
- The material of the joint tape can be plastered and painted.
- Stretchable in width, resists movement of the wall structure.

Fields of application

- For protecting window and door joints and building structures from moisture generated in the room.

Adhering

- Concrete
- Bricks and masonry
- Metal
- Wood

Application instructions

Application conditions

Application temperature between -5°C and +30°C.

Surface preparation

Installation surfaces must be clean and dry, free from oil, grease and dust. Do not clean the surfaces with chemicals containing substances impairing or reducing bonding. Roughness, unevenness or porosity may reduce bonding. Non-bonding surfaces should be stabilised by priming.

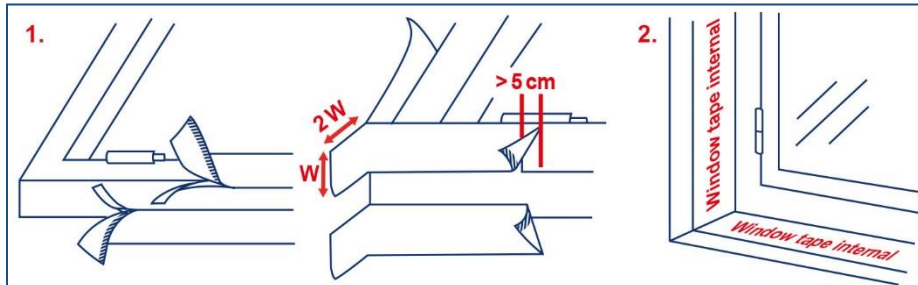
Application method

Installation tape should be unwound from the rail and cut to the desired length. Remove the protective film from the adhesive strip and install the tape on the window jamb. If the window or door is installed flush with the wall, leave one tape width in reserve in the corners (see the figure). If the window or door is installed inwards in relation to the wall, leave a half tape width in reserve in the corners (see the figure). The tape is glued along the entire perimeter of the frame, starting from the lower window strip (lower strip). Follow the same procedure with all sides to be sealed. Then align the window or door jamb, fasten it properly and fill the window joint with construction foam. After the foam has completely set, remove the excess foam and fasten the other edge to the window recess/wall. For an optimal adhesive bond, use a pressure roller.

The adhesive stripes on both sides of the window tape allow use of the joint tape before or after installing the windows/doors and assembly foam. For an optimal adhesive bond, use a pressure roller.

If the adhesive strip gets dusty or loses its bonding properties for some other reason, an adhesive sealant may be used to fasten the joint tape.

The joint tape must be covered as soon as possible but no later than three months after installation of the joint tape.



Technical data

Properties	Value	Unit
Sd value	38	M
Adhesive weight	200 ± 20	g/m ²
Adhesive strength (EN 1928, steel plate, 180°)	>35	N/24mm
Tensile strength (EN 12311, sample A 50mm)	10 ± 2	MPa
Ultimate elongation (EN 12311, sample A 50mm)	40 ± 10	%
Watertightness 2 [h] (EN 1928, method B)	24h 1000mm H ₂ O/No leaks	
Airtightness (DIN EN 1026)	airtight/Class 4	
Inclined rain resistance (DIN EN 1027)	watertight / 9A	
UV resistance	3	months
Temperature resistance	-40...+80	°C

The values specified were obtained at +23 °C and 50% relative humidity, unless otherwise specified. These values may vary depending on environmental factors such as temperature, moisture and type of substrates.

Colour

Pink.

Package

Packed in a cardboard box. 25m per roll. Widths 70mm, 100mm and 150mm.

Storage conditions and shelf life

The guaranteed storage period is 12 months from the date of production subject to storage in the sealed original packaging, watertight and in a cool, dry location at a temperature from +5°C to +25°C. Protect from direct sunlight, heat radiation, dust, humidity and chemical vapours.

Limitations

- Not suitable for surfaces in permanent contact with water.
- There is no adhesion to PE, PP, PTFE (Teflon®).
- Due to the wide variety of possible substrates, we recommend a preliminary compatibility test.

Safety regulations

Follow basic hygiene requirements. Empty the packaging thoroughly and dispose of it in accordance with regulations.

PENOSIL

We save energy /  Wolf Group

www.penosil.com

Wolf Group Head Office

Suur-Paala 10
13619 Tallinn
Estonia

tel +372 605 9300
fax +372 605 9315
info@penosil.com

Note: The instructions in the present documentation are based on tests carried out by the manufacturer and are presented in good faith. Due to variations in materials and substrates as well as the various application possibilities that are beyond our control, the manufacturer is not liable for the results achieved. In any case, it is recommended to test the product suitability at the place of application. Manufacturer reserves the right to modify products without prior notice.
This TDS replaces and supersedes all previous data sheets on the same product.